



Gator 10.8V

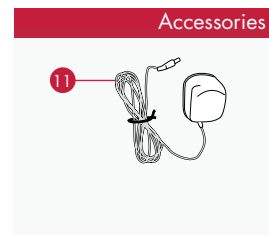
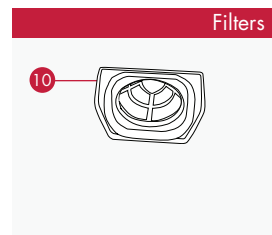
User Guide



HQ86-GA-B-ME 
Hoover.a 

1 MACHINE OVERVIEW

- 1 Charging indicator (red LED)
- 2 On/off switch
- 3 Filter release button
- 4 Handle
- 5 Dirt container release button
- 6 Dirt container release button
- 7 Retractable crevice tool
- 8 Car adapter socket (Gator Car only)
- 9 Charger socket
- 10 Filter
- 11 Charger



2 GENERAL SAFETY INFORMATION

FOR HOUSEHOLD USE ONLY.

Please keep instructions for further use and use only as instructed in this guide. This handheld cleaner is intended for household use only and NOT for commercial or industrial use.

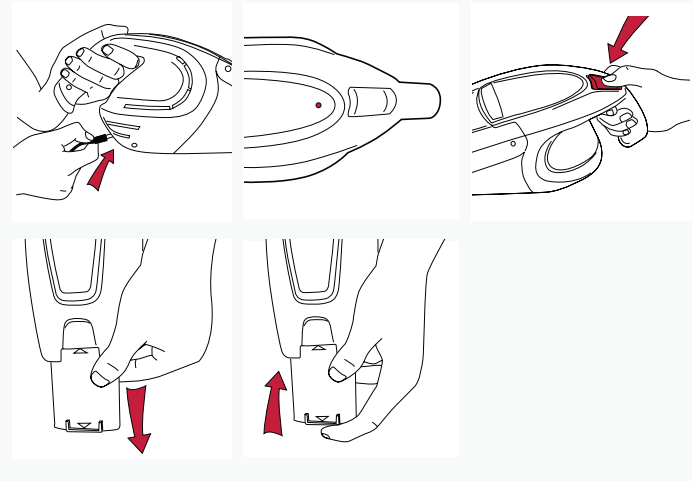
1. This handheld is for indoor use only.
2. For dry debris use, not to be used on wet surfaces.
3. Keep fingers, hair and loose clothing from moving parts and openings whilst using the handheld.
4. Only Hoover recommend charger, tools and accessories should be used with this handheld.
5. This appliance can be used by children aged from 8 years and above and persons with reduced physical, sensory or mental capabilities or lack of experience and knowledge if they have been given supervision or instruction concerning use of the appliance in a safe way and understand the hazards involved. Children shall not play with the appliance. Cleaning and user maintenance shall not be made by children without supervision.
6. Don't charge the handheld outdoors.
7. Don't use this handheld if it has been dropped, damaged, immersed in water or left outdoors.
8. Don't run over the charger cord or use handheld if the charger cord or plug is damaged.
9. Don't handle the plug or use the handheld with wet hands.
10. Don't throw the handheld into fire or expose to high temperatures, as the handheld contains a rechargeable nickel cadmium battery which may cause damage or burst.
11. Don't pull or carry this handheld by the charger cord. Don't use the charger cord as a handle, pull the charger cord around corners or sharp edges or close a door over the charger cord. Don't unplug handheld by pulling on the charger cord.
12. Don't attempt to remove blockages with sharp objects as this may cause damage to your handheld.
13. Don't use the handheld charger with incorrect voltage as this may result in damage or injury to the user. The correct voltage is listed on the ratings label.
14. Don't vacuum up hot coals, cigarette butts, matches or smoking hot burning items or use in an area where there may be harmful fluids (chlorine, bleach, and ammonia drain cleaner).
15. Always make sure filter and dirt container are fitted correctly before using your handheld.
16. Always turn off the Gator handheld vacuum and disconnect the charger before carrying out any maintenance.
17. Turn off all controls on the handheld before disconnecting or connecting the charger.
18. Take extra care when cleaning on the stairs.
19. Always replace the fuse in the plug with a 13amp fuse.
20. Always protect the charger cable from heated surfaces or near open flames.
21. Use only CE approved 13amp extension cords, non-approved extension cords may overheat. Care should be taken to arrange the extension cord as it can be a trip hazard.
22. Always carry the handheld by the handle.
23. Store your handheld in a cool, dry area.

PLEASE KEEP INSTRUCTIONS FOR FURTHER USE.

3 OPERATION

Important: Failure to initially charge the battery for 24 hours, may result in poor battery performance.

Operating the appliance

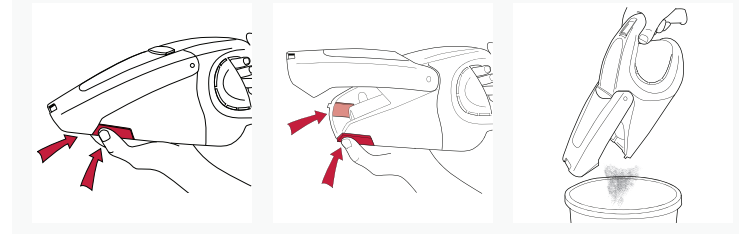


NOTE: The power switch must be in the off position to charge the battery.

4 MAINTENANCE

Important: Always unplug the charging lead from the machine before carrying out any maintenance.

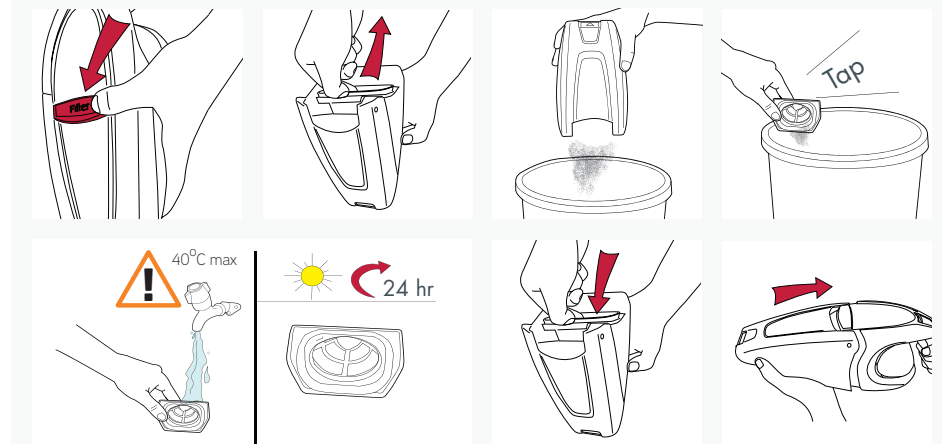
Emptying the dirt container



NOTE: We recommend to empty the dirt container after each use.

Emptying and washing the filter

Important: Do not use the handheld without the filter in place.



5 FAQs

Is there an accessory missing?

- Check the 'This pack contains' panel on the box to make sure the part is included with your machine.

Why does my handheld have no power?

- Battery may not be fully charged. If using the handheld for the first time the initial charge should be 24 hours. The charging light will illuminate continuously when charger is connected.

Why won't the handheld pick up?


- The nozzle or crevice tool may be blocked, check and clear any blockage.
- The filter may be clogged, clean the filter. Go to 'Maintenance'.
- The battery is getting weak, let the battery run until it stops and recharge.
- The dirt container may be full, empty the dirt container. Go to 'Maintenance'.

Why won't the battery recharge?


- The charger may not be inserted correctly. Check the fuse in the plug, if this needs replacing always replace with a 13amp fuse.

OTHER INFORMATION 6

Service and Help

To find your nearest Hoover retailer, simply visit [hoover](#) 


Consumables

The use of genuine Hoover spare parts helps to maintain optimised performance and validates your guarantee. For more information visit [hoover.ae](#) 

Technical Specification

Voltage: 10.8V
Weight: 1.24kg
Capacity: 0.3L
Cleaning time: 13 mins
Charging time: 12 hrs
Subject to technical change without notice.

EEC Statement of Compliance

Manufacturer/EEC importer: Hoover, hereby on our own responsibility, declare that the HQ86-GA-B-M  Hoover is manufactured in compliance with the following CE Directives:

Safety: 2006/95/EC Low Voltage Directive
EMC: 2004/108/EC Electromagnetic Compatibility Directive

Waste electrical products should not be disposed of with household waste. Please recycle where facilities exist. Check with your Local Authority or retailer for recycling advice.



6 معلومات أخرى

Service and Help

To find your nearest Hoover retailer, simply visit hoover.ae

Consumables

The use of genuine Hoover spare parts helps to maintain optimised performance and validates your guarantee. For more information visit hoover.ae

Technical Specification



Voltage: 10.8V

Weight: 1.24kg

Capacity: 0.3L

Cleaning time: 13 mins

Charging time: 12 hrs

Subject to technical change without notice.

EEC Statement of Compliance

Manufacturer/EEC importer: Hoover, hereby on our own responsibility, declare that the HQ86-GA-B-ME Hoover is manufactured in compliance with the following CE Directives:

Safety: 2006/95/EC Low Voltage Directive

EMC: 2004/108/EC Electromagnetic Compatibility Directive

Waste electrical products should not be disposed of with household waste. Please recycle where facilities exist. Check with your Local Authority or retailer for recycling advice.

5 الأسئلة المتكررة

Is there an accessory missing?

- Check the 'This pack contains' panel on the box to make sure the part is included with your machine.

Why does my handheld have no power?

- Battery may not be fully charged. If using the handheld for the first time the initial charge should be 24 hours. The charging light will illuminate continuously when charger is connected.



Why won't the handheld pick up?

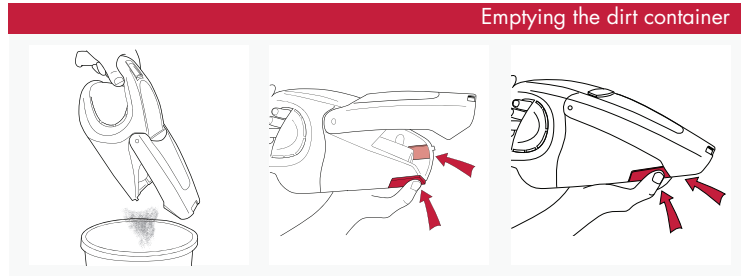
- The nozzle or crevice tool may be blocked, check and clear any blockage.
 - The filter may be clogged, clean the filter. Go to 'Maintenance'.
- The battery is getting weak, let the battery run until it stops and recharge.
- The dirt container may be full, empty the dirt container. Go to 'Maintenance'.

Why won't the battery recharge?

- The charger may not be inserted correctly. Check the fuse in the plug, if this needs replacing always replace with a 13amp fuse.

4 الصيانة

Important: Always unplug the charging lead from the machine before carrying out any maintenance.



NOTE: We recommend to empty the dirt container after each use.



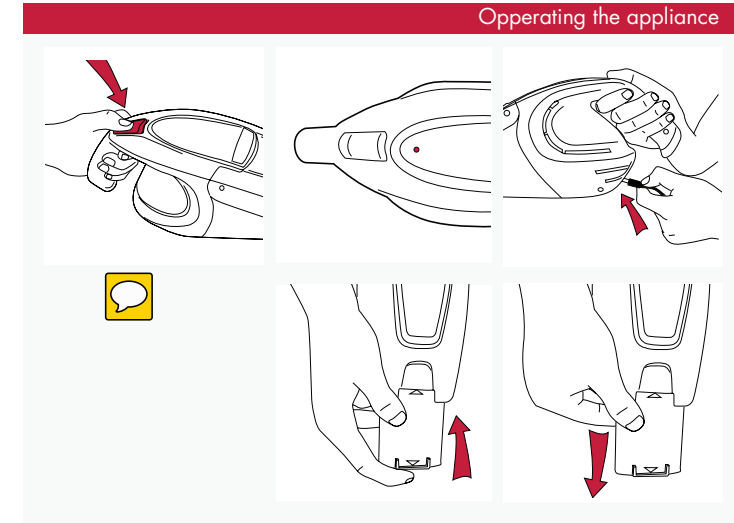
Emptying and washing the filter

Important: Do not use the handheld without the filter in place.



3 التشغيل

Important: Failure to initially charge the battery for 24 hours, may result in poor battery performance.



NOTE: The power switch must be in the off position to charge the battery.

2 معلومات السلامة العامة

FOR HOUSEHOLD USE ONLY.

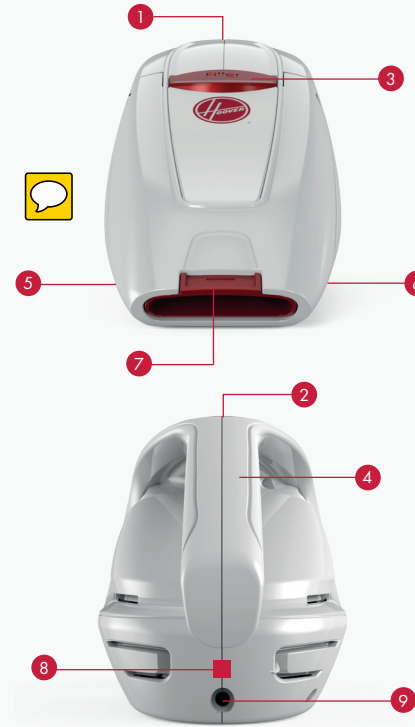
Please keep instructions for further use and use only as instructed in this guide. This handheld cleaner is intended for household use only and NOT for commercial or industrial use.

1. This handheld is for indoor use only.
2. For dry debris use, not to be used on wet surfaces.
3. Keep fingers, hair and loose clothing from moving parts and openings whilst using the handheld.
4. Only Hoover recommend charger, tools and accessories should be used with this handheld.
5. This appliance can be used by children aged from 8 years and above and persons with reduced physical, sensory or mental capabilities or lack of experience and knowledge if they have been given supervision or instruction concerning use of the appliance in a safe way and understand the hazards involved. Children shall not play with the appliance. Charging and user maintenance shall not be made by children without supervision.
6. Don't charge the handheld outdoors.
7. Don't use this handheld if it has been dropped, damaged, immersed in water or left outdoors.
8. Don't run over the charger cord or use handheld if the charger cord or plug is damaged.
9. Don't handle the plug or use the handheld with wet hands.
10. Don't throw the handheld into fire or expose to high temperatures, as the handheld contains a rechargeable nickel cadmium battery which may cause damage or burst.
11. Don't pull or carry this handheld by the charger cord. Don't use the charger cord as a handle, pull the charger cord around corners or sharp edges or close a door over the charger cord. Don't unplug handheld by pulling on the charger cord.
12. Don't attempt to remove blockages with sharp objects as this may cause damage to your handheld.
13. Don't use the handheld charger with incorrect voltage as this may result in damage or injury to the user. The correct voltage is listed on the ratings label.
14. Don't vacuum up hot coals, cigarette butts, matches or smoking hot burning items or use in an area where there may be harmful fluids (chlorine, bleach, and ammonia drain cleaner).
15. Always make sure filter and dirt container are fitted correctly before using your handheld.
16. Always turn off the Gator handheld vacuum and disconnect the charger before carrying out any maintenance.
17. Turn off all controls on the handheld before disconnecting or connecting the charger.
18. Take extra care when cleaning on the stairs.
19. Always replace the fuse in the plug with a 13amp fuse.
20. Always protect the charger cable from heated surfaces or near open flames.
21. Use only CE approved 13amp extension cords, non-approved extension cords may overheat. Care should be taken to arrange the extension cord as it can be a trip hazard.
22. Always carry the handheld by the handle.
23. Store your handheld in a cool, dry area.

PLEASE KEEP INSTRUCTIONS FOR FURTHER USE.

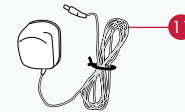
1 نظرة عامة على الجهاز

الوحدة

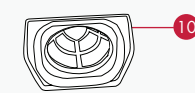


- Charging indicator (red LED) 1
- On/off switch 2
- Filter release button 3
- Handle 4
- Dirt container release button 5
- Dirt container release button 6
- Retractable crevice tool 7
- Car adapter socket (Gator Car only) 8
- Charger socket 9
- Filter 10
- Charger 11

Accessories



Filters





Gator 10.8V

دليل المستخدم

HQ86-GA-B-ME
Hoover.ae